



THE UNIVERSITY OF
**WESTERN
AUSTRALIA**

2019 STUDY ABROAD GUIDE

GLOBAL LEARNING OFFICE





Welcome to UWA

Located by the Swan River and only minutes from Perth's city centre, UWA is often described as one of Australia's most picturesque campuses.



→ Enjoy the scenery of Matilda Bay and take part in kayaking, rowing or sailing on the Swan River



- ← Socialise with friends at one of the many cafés
- Enjoy an outdoor cinema experience at UWA's Somerville Auditorium



- ← Relax in heritage-listed gardens and open courtyards

- ↓ Try different cuisines at our many food trucks located on campus



UWA Claremont

Just a few minutes from the main Perth campus is the University's historic Claremont campus which is home to the UWA Centre for English Language Teaching (UWA CELT) and Taylors College which provides foundation courses for international students.



- ↗ Experience the atmosphere at Guild Village, home to shops, food outlets, a medical centre, hairdresser, bank and other student amenities
- ← Discover the Cultural Precinct, UWA's cultural hub which supports music, theatre, dance, literature and art exhibition programs



UWA Albany

UWA has a high-tech education centre in the southwest town of Western Australia — a five-hour drive from Perth. Here you can experience all that regional Western Australia has to offer while studying at university.

albany.uwa.edu.au

UWA student life



Enjoy a vibrant student
life with social activities
on campus

Check out what our current students get up to:

 [uwastudents](#)  [uwa_students](#)  [uwastudents](#)  [uwastudents](#)  [uwastudents](#)

UWA Student Guild

Student life at UWA is vibrant with social activities on campus organised by the UWA Student Guild, the representative student organisation. The UWA Student Guild has a reputation for being one of the most active in Australia. It organises countless activities including festivals, workshops, end-of-semester parties, networking opportunities, the Guild Ball (formal dance) and the National Campus Band competition, and runs more than 180 clubs and societies.

The Guild also provides student representation, with staff on hand to give extra support to you on academic, financial or welfare matters affecting your study. The free Guild membership entitles students to great discounts on campus and at restaurants, shops, activities and services around Perth.
uwastudentguild.com

The Guild Village

The Guild Village is a hive of activity and houses shops, food outlets, a medical centre, hairdresser, bank and other useful student amenities. A regular marketplace that's held in the Guild Village is the place to buy inexpensive, locally made clothes, jewellery and more.

Leisure and recreation

The Cultural Precinct

The Cultural Precinct is UWA's cultural hub, supporting the music, theatre, dance, literature and exhibition programs on campus. It also supports broader arts and cultural events that take place throughout the year, including collaborations with the Perth Festival.

culturalprecinct.uwa.edu.au

UWA Sport

Becoming a Fitness Centre member gives you access to more than 50 group fitness classes a week, state-of-the-art equipment, multiple training zones, qualified instructors and free tickets to our popular Masterclasses.

Kickstart your day with a run on the treadmills, or take time out with a lunchtime yoga class.

Practise your skills in squash, basketball, or tennis on one of our many courts.

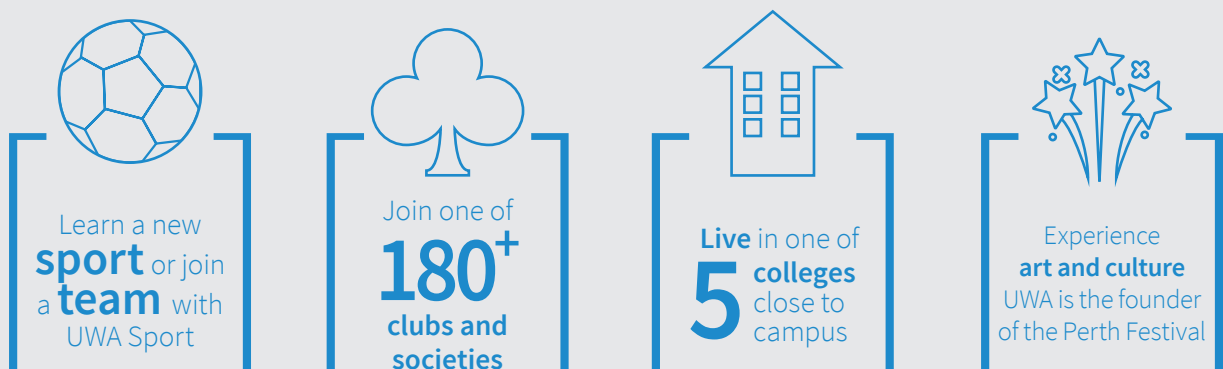
Up for some healthy competition? Join our interfaculty, intercollege, or social competitions, or represent one of our 27 sport clubs.

If you'd like to try something new, sign up for our Recreate Short Courses. With everything from salsa to surfing, trips to Rottnest and self-defence classes, there really is something for everyone.

We also support our elite athletes in their academic and sporting pursuits through the Student Athlete Development Program.

Your university adventure starts here. Immerse yourself in the opportunities available to you through sport and make your time at university unforgettable.

sport.uwa.edu.au



Why choose UWA

Study at an
internationally
recognised
university

Ranked in the
world's Top

100

1st in Western
Australia
(ARWU 2018)



Well-established
industry
partnerships



GROUP
OF EIGHT
AUSTRALIA

MEMBER

UWA is a member of the **Group of Eight** – a coalition of the best research-intensive universities in Australia

Ranked in
the world's

TOP
50

- Agriculture and Forestry
- Anatomy and Physiology
- Civil and Structural Engineering
- Earth and Marine Science
- Mineral and Mining Engineering
- Performing Arts
- Sports-related subjects
(QS 2018)



Life in Perth

Perth is Australia's fourth-largest city and capital of the thriving state of Western Australia. Voted as one of the top 10 cities in the world by the Economist Intelligence Unit, the city offers an inspiring study environment with sunny weather, a relaxed outdoor lifestyle and beautiful natural scenery.

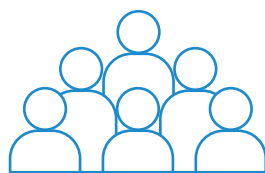
Perth holds international appeal for its safety, strong cultural diversity and urban sophistication. The city's cultural scene offers an array of activities, with plenty of festivals, eateries, modern bars and weekend markets adding flavour to the city and its suburbs.

study.uwa.edu.au/perth



Cultural diversity

More than **200** different nationalities live, work and study in WA, speaking more than **170** languages.



Perth's population

2.02 million

Complete
religious freedom

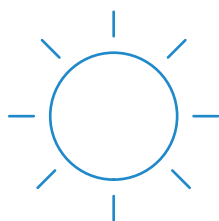
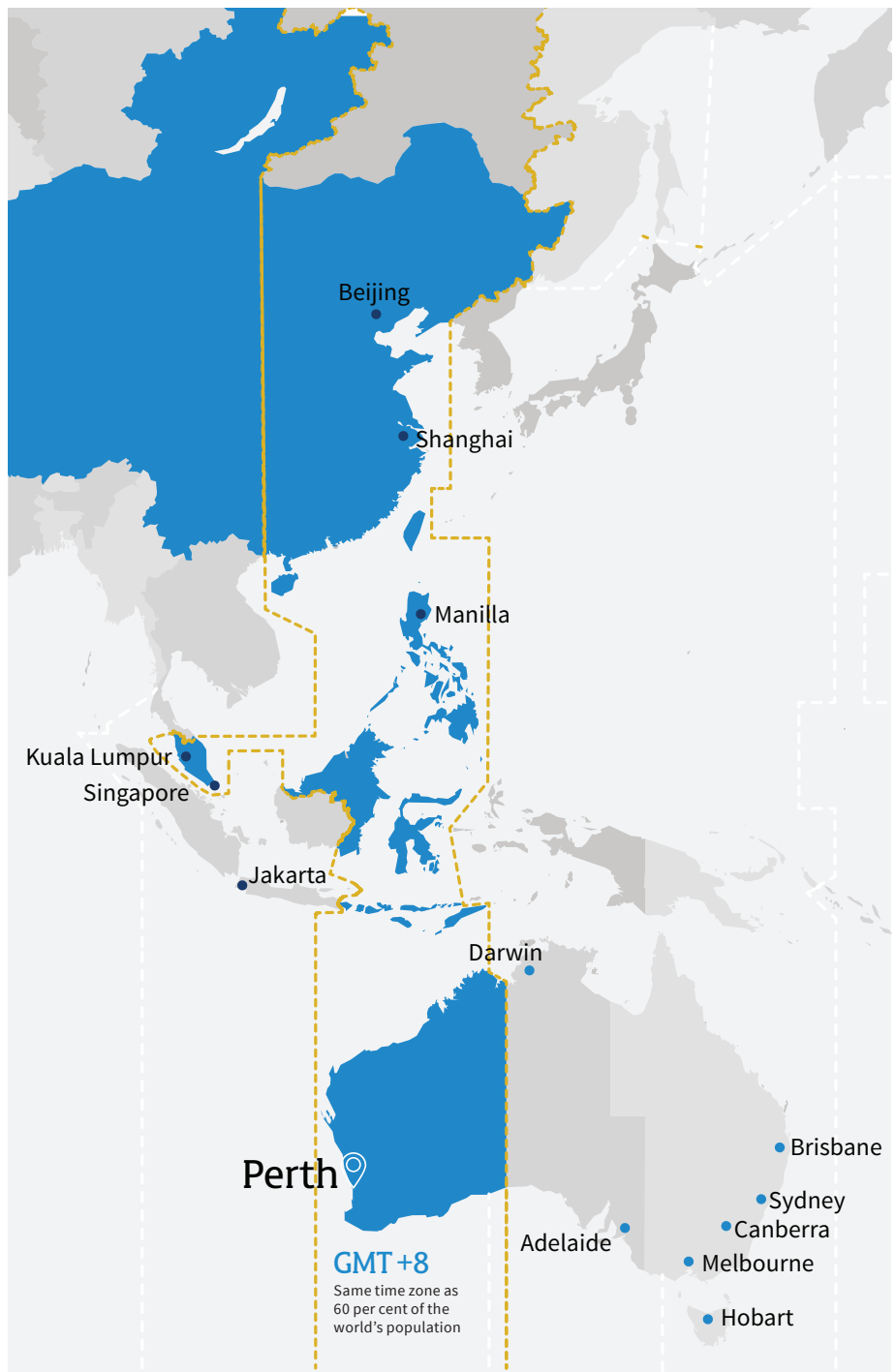


Language

English

Democratic
government
(Westminster system)

FREE wi-fi 
in the CBD



Weather

Summer: 18–32°C
Autumn: 13–26°C
Winter: 9–18°C
Spring: 11–23°C



Direct flights to

London: 17 hours
Hong Kong: 8 hours
Guangzhou: 8 hours
Tokyo: 9.5 hours
Jakarta: 4.5 hours
Singapore: 5.5 hours



One of Australia's most affordable capital cities

(Worldwide Cost of Living Survey 2018, Economist Intelligence Unit)

Connecting you to industry

At UWA you'll not only study towards a degree, but have the opportunity to gain valuable experience towards your future career.

These partnerships enable you to take part in a number of activities including:

Placements for credit

For-credit placements or practicums may be arranged as part of your study abroad experience. They're usually one day a week in a supervised workplace, run between 80 to 100 hours in total and can be anything from getting a feel for a legitimate working environment to participating in live projects. These practicums are available for Arts, Commerce, or Science students.

For more information please contact the Global Learning Office

studyabroad@uwa.edu.au

A community of entrepreneurs

Bloom provides support for young entrepreneurs through mentorship, skill-focused events and providing an open working space for entrepreneurs to flourish. UWA is proud to be a Gold Member of Bloom.

bloom.org.au

Service learning units

These units are another way to gain experience and they involve unpaid work with not-for-profit, community or government services. Some can earn you academic credit as well as the chance to put your degree skills to use.

The McCusker Centre for Citizenship provides this kind of learning. Established in 2015, the centre offers structured, quality internships with not-for-profit, community and government organisations locally, regionally and globally to all UWA students. Students will be matched based on their application and the internship opportunities available, and you can gain academic credit.

mccuskercentre.uwa.edu.au

Guild Volunteering

Guild Volunteering gets you off campus and into the real world to start making a difference. Broaden your mind, meet new people and develop skills in an area you're interested in. You may also find that some volunteering is eligible for your supplementary academic transcript.

volunteering.guild.uwa.edu.au



What can I study?

Undergraduate and postgraduate study

UWA's undergraduate curriculum provides you with an extensive range of majors and increased flexibility to build your own study plan according to your interests and the credit requirements of your home university. You can choose courses at different levels and across more than one discipline, provided you meet the academic prerequisites. Please note that some postgraduate units may be restricted.

Choose units from the following majors and specialisations:

Business School

- Accounting
- Business Law
- Economics
- Finance
- Human Resource Management
- Management
- Marketing
- Professional Economics

School of Design

- Architecture
- Asian Studies
- Fine Arts
- History of Art
- Landscape Architecture

School of Humanities

- Classics and Ancient History
- English and Cultural Studies
- French Studies
- German Studies
- History
- Italian Studies
- Philosophy
- Spanish Studies

Conservatorium of Music

- Music: Electronic Music and Sound Design
- Music: General Studies
- Music: Specialist Studies
- Music Studies

Law School

- Business Law
- Law and Society

School of Social Sciences

- Anthropology and Sociology
- Archaeology
- Asian Studies
- Chinese Studies
- Communication and Media Studies
- Indonesian Studies
- Japanese Studies
- Korean Studies
- Linguistics
- Political Science and International Relations

School of Agriculture and Science

- Agricultural Science
- Environmental Science
- Geographical Science
- Human Geography and Planning
- Natural Resource Management

School of Biological Sciences

- Botany
- Conservation Biology
- Marine Science
- Science Communication
- Zoology

School of Earth Sciences

- Geology

School of Human Sciences

- Anatomy and Human Biology
- Exercise and Health
- Neuroscience
- Physiology
- Sport Science
- Sport Science, Exercise and Health

School of Molecular Sciences

- Biochemistry and Molecular Biology
- Chemistry
- Genetics

School of Psychological Sciences

- Psychological Science
- Psychology

School of Engineering

- Engineering Science

School of Physics, Mathematics and Computing

- Computer Science
- Data Science
- Mathematics
- Physics

Medical School

- Aboriginal Health and Wellbeing
- Medical Sciences

School of Biomedical Sciences

- Microbiology and Immunology
- Pathology and Laboratory Medicine
- Pharmacology

School of Population and Global Health

- Population Health

School of Indigenous Studies

- Indigenous Knowledge, History and Heritage

Research

UWA is a leading research institution with prestigious links to thought leaders around the world. Many of our courses encourage students to explore research, so there may be opportunities for you to undertake research during your undergraduate studies. If you would like to pursue undergraduate research during your time at UWA, you will need to confirm all arrangements prior to arrival. Contact the Global Learning Office for more information.

If you are interested in graduate research, you will need to contact a Graduate Research Coordinator in the appropriate school to discuss a proposed research topic and confirm the availability of your preferred supervisor before contacting the Global Learning Office. Visit postgraduate.uwa.edu.au/contact/coordinators for a list of Graduate Research Coordinators.

Selecting your classes

How many units can I take?

Study abroad students must enrol in a full academic load of 18 - 24 points per semester. Most units are worth six points, so this generally works out to four units per semester.

Typically, most units are offered for a semester, but some must be taken for a full year.

How do I select my units?

You can use the online UWA Handbook to browse through units offered at UWA. All units consist of four letters detailing the discipline of the unit (such as ECON for Economics, PSYC for Psychology) and four numbers.

- Units with numbers beginning from 1 to 3 are generally undergraduate units. A code beginning with 1 represents first-year level studies, 2 represents second-year level studies, and so on.
- A unit with a number beginning with 4 is generally an honours-level unit and may require a minimum of three years' study prior to enrolling. Please note honours-level units are not always available to Study Abroad students.

- Some units coded 3xxx and 4xxx are common to both postgraduate and undergraduate programs.
- Units with numbers beginning with 5 and above are postgraduate level and may require a minimum of three years' tertiary study in a relevant field prior to enrolling.
- The Bachelor of Law program has been replaced by the Juris Doctor. As such, there are several restrictions to which Law units Study abroad students can enrol in. For more information, contact the Global Learning Office.
- Postgraduate Psychology units are not available to Study abroad students.

handbooks.uwa.edu.au

Location

You should normally only select units offered at the Perth campus. If you are interested in units offered at our Albany campus (a rural city located 400 kilometres south of Perth), contact the Global Learning Office.

Prerequisites

You will need to meet the relevant academic prerequisites both in level and content.

Teaching period

You should normally select units which are offered in Semester 1 or Semester 2. If you wish to choose units offered in other study periods, contact the Global Learning Office.

Academic year

The UWA academic year runs from late February to late November. If you are studying for two semesters and commencing in Semester 2, you will not be able to make your unit selection for your second semester until around late October when new units for the following academic year will be available.

Find out more

<https://study.uwa.edu.au/courses-and-careers/study-abroad-and-student-exchange/Completing-exchange-at-UWA>



English language requirements

English entry requirements

Qualification Equivalents	UWA Requirements
IELTS (Academic)	Overall minimum score of 6.5, no band lower than 6.0
International Baccalaureate Diploma (IB)	English A1 at SL: minimum score 4, or at HL: minimum score 3
	English A2 at SL: minimum score 4, or at HL: minimum score 3
	English B at HL: minimum score 5
	English A: Literature at SL: minimum score 4, or at HL: minimum score 3
	English A: Language and Literature at SL: minimum score 4, or at HL: minimum score 3
TOEFL	Literature and Performance (SL): minimum score 4
	Internet-based TOEFL (iBT): an overall score of 82 or above with a minimum score of 22 in writing, 18 in reading, 20 in speaking and 20 in listening

For a full list of the University's English language requirements, refer to study.uwa.edu.au/elc.
Results are valid for two years only. A higher level of English is required for some courses.

In addition to meeting the University English Language Requirement, students must satisfy one of the following:

High School Students

At the time of application, you should have completed a high school qualification in accordance with the admission requirements for entry into the relevant bachelor's degree program at UWA (for example, Bachelor of Arts)

study.uwa.edu.au/how-to-apply/entry-requirements/international-and-overseas-qualifications

Undergrad Students

To study at UWA as a study abroad student, you should normally:

- have completed one semester of tertiary study at a recognised institution
- be in good academic standing at your home university

Postgrad Students

Admission to postgraduate courses normally requires the completion of an undergraduate degree.

Alternative English Language Pathway

Students who do not meet the standard English language requirements as shown in the table above, may be approved for admission to UWA on the basis of the alternative English language competency requirements. Students are assessed on a case by case basis and if approved, they must enrol in the following unit in their first semester of enrolment:

Professional and Academic Communications (PACM1100). Minimum scores for this conditional offer are:

- IELTS 6.0 (no band score below 5.5)
- Internet-based TOEFL 70 (17 in Listening, 19 in Speaking, 14 in Reading, 20 in Writing)
- UWA CELT Pathway: EAP Pathway 65% (no band less than 60%)
- UWA CELT Pathway: Bridging Course Module 1 65% / Module 2 60% (no band less than 60%)

Enrolling in the PACM1100 unit will take the place of another coursework unit.

Help with English language skills

UWA Centre for English Language Teaching (UWA CELT)

UWA CELT offers accredited English Language Intensive Courses for Overseas Students (ELICOS) programs in General English and English for Academic Purposes, as well as preparation for IELTS as an internationally recognised examination.

Academic English and Study Skills Bridging Course (Bridging Course)

The Bridging Course has been designed for international students who wish to study at UWA but do not have the University's required level of English proficiency. The course is also suitable for students with unconditional entry into UWA who would like to further develop their language ability, study and research skills and confidence before commencing tertiary study.

A 70 per cent pass in the Bridging Course meets the University's English language requirement for most undergraduate and postgraduate courses, although some postgraduate courses have a higher English language requirement.

The University offers a choice of English language programs through the Centre for English Language Teaching (UWA CELT) to prepare international students for tertiary academic study.

celt.uwa.edu.au
+61 8 6488 3539

Bridging Course minimum entry requirements

Requirements	20-week program
IELTS	5.5 with no band score below 5.0
Internet-based TOEFL	58 with a minimum score of 18 in the writing section, 16 in the speaking section and 12 in the listening and reading sections
Cambridge First Certificate in English	Minimum score of 60 and borderline for each skill
Pearson Test of English (Academic)	Overall score of 49 with no individual score below 42
UWA CELT General English	Upper-intermediate with a minimum of 70% (no individual skill below 60%)
UWA CELT English for Academic Purposes	Minimum of 60% (no individual skill below 55%)

Accommodation at UWA

We understand how important it is to find good-quality accommodation close to the UWA campus. There are many options available designed to suit your individual needs.

Living on campus

Living on campus gives you an immediate sense of belonging and an instant circle of friends from across Australia and around the world.

UWA's five residential colleges — University Hall, St Catherine's College, St George's College, St Thomas More College and Trinity — each offer a valuable dimension to your UWA experience.

On-campus accommodation is located directly opposite the University and offers you a world-class living and learning environment. The colleges provide academic support; a full calendar of sporting, cultural and social events; leadership opportunities; and fantastic facilities in a warm and welcoming home away from home.

uwa.edu.au/colleges

When to apply

The online portal accepts your application up to 12 months before you want to live on campus. We recommend applying as soon as possible, and you don't have to wait until you receive an offer from UWA.

How to apply

1. Research the college websites to decide which suits you best.
2. Complete and submit your application via the online portal at livingoncampus.uwa.edu.au.
3. You will be contacted directly by your first preference college within two weeks.

Overview of 2018 residential college fees and charges¹

	St Catherine's College	St George's College	St Thomas More College ²	Trinity	University Hall ²
Weekly fee ²	AUD\$465	AUD\$490	AUD\$365	AUD\$434	AUD\$365
Standard year fee ³	AUD\$18,600	AUD\$19,450	AUD\$14,600	AUD\$17,360	AUD\$14,600
College numbers	400	225	400	365	750

- (1) The fees overview should be read in conjunction with each college's fee schedule. Prices quoted are based on 2018 standard single rates; additional room types are also available. Weekly fees vary depending on the room type, length of stay and additional inclusions. Fees for 2019 will be available late 2018; check the individual college websites for the latest and most comprehensive information.
- (2) The weekly fee quoted for University Hall and St Thomas More College includes 14 meals per week. Students are welcome to upgrade to 21 meals per week for an additional cost. All other colleges' rates are inclusive of 21 meals per week.
- (3) The standard yearly fee includes accommodation, meals, utilities and cleaning. Other annual fees apply such as a contingency fee, an internet fee, building and/or amenities fees and College Club membership. Refer to the individual college websites for full fee schedules.



Living off campus

UWA owns and manages a group of houses, units and studio apartments, collectively known as 'Crawley Village.' They are available for UWA students to rent, and are offered either unfurnished or with partial furnishings.

Properties are located within walking distance of the UWA campus, shops, cafés and restaurants, banks and other amenities, and are ideally suited to postgraduate students or students with families.

You can rent an apartment, unit or house on your own or you can share with others. Whether you choose to rent a UWA-owned property or one that is privately or commercially listed, please note that you take full responsibility for the property and sign a rental contract.

As a guide, the average cost of renting or leasing an unfurnished one- or two-bedroom unit close to UWA is between AUD\$265 and AUD\$500 per week. There are also establishment costs to consider, such as a bond. Other costs, such as electricity and/or gas, telephone and food, are usually not included in the weekly rent.

accommodation.uwa.edu.au/off-campus

Housing Database

UWA Accommodation provides an online housing database for UWA students. International students who have been offered a place at UWA, but have not yet enrolled, can still create an account and access the database. This searchable database includes properties listed by UWA students or staff members who have a vacant property to rent, or other UWA students looking to share a property.

accommodation.uwa.edu.au/housing-database

Living on campus

uwa.edu.au/colleges

Colleges Admissions Office

Tel +61 8 9488 0920

Email residentialcolleges@uwa.edu.au

Living off campus

accommodation.uwa.edu.au

UWA Accommodation Office

Tel +61 8 9488 0500

Email accommodation@uwa.edu.au



Money matters

As a student you are eligible to receive discounts for experiences, food and drink, entertainment and more.



Sightseeing Pass Australia

15% discount on select tours and attractions around Western Australia.¹

sightseeingpassaustralia.com



Boat Collective

50% off all Floating Sessions, departing from Elizabeth Quay.¹

boatcollective.com.au



Segway Tours

20% off Segway tours in Perth, Fremantle and Rottnest.¹

segwaytoursaustralia.com.au



STA Travel

Receive student-discounted flights through STA Travel, located on the first floor of the UWA Guild Village.

statravel.com.au/uwa.htm



Discounted eats

Around campus you can receive 10% off food and drinks at the Guild's seven outlets.¹



Boost Juice

Vibe member discounts through the Boost Juice app only.

vibe.boostjuice.com.au



Luna Palace Cinemas

Student concession discounts on movie tickets and cheap tickets on certain days of the week.

lunapalace.com.au



Student discounts

The UWA Student Guild currently has more than 100 Guild member discounts for various food, activities, fitness, shopping and services around Perth.

¹ Guild student discounts are available through the UWA Guild and are subject to change each year. To see the full list of special offers, visit uwastudentguild.com/2018-guild-member-discounts.

Compared to other major cities around the world, living and studying in Perth is a smart decision for international students.

Australia's most affordable capital city.

Perth is more affordable than Adelaide, Brisbane, Melbourne and Sydney, according to the Economist Intelligence Unit's *Worldwide Cost of Living Survey 2018*.

study.uwa.edu.au/cost-of-living



Cost of living

The annual cost of living in Perth depends on your lifestyle and the type of accommodation you choose, however AUD\$400–\$600 per week is generally sufficient for most single students to live comfortably (this does not include tuition fees or medical cover). Please consider extra funds to cover various items such as airfares and textbooks. There may also be ancillary fees applicable to your course.

Working in Australia as an international student

Under the terms of a student visa, once an international student has commenced their course, they may work up to 40 hours per fortnight while their course is in session and unlimited hours during scheduled course breaks.
homeaffairs.gov.au

Student Services and Amenities Fee (SSAF)

The UWA Student Services and Amenities Fee (SSAF) is a compulsory fee that directly benefits all UWA students. The fee is used to develop and provide a range of recreational facilities together with social, education and representation activities and services.
study.uwa.edu.au/fees-scholarships

Overseas Student Health Cover (OSHC)

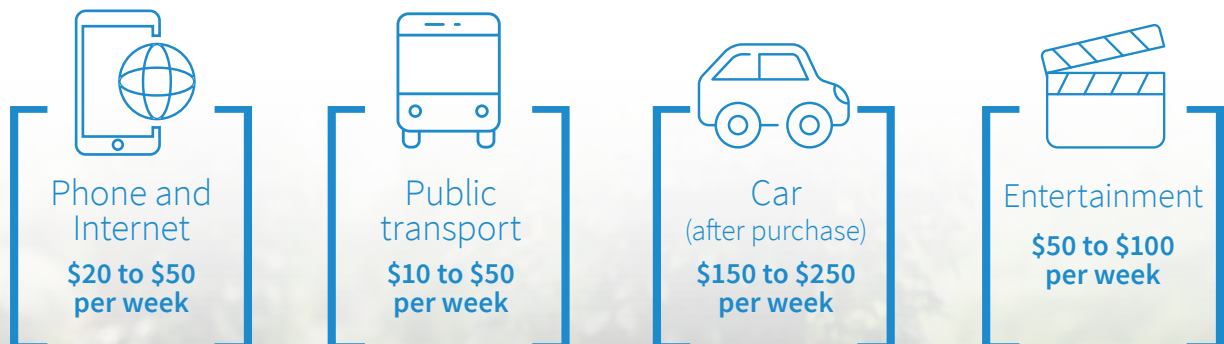
The Department of Home Affairs requires international students applying for a student visa to have Overseas Student Health Cover (OSHC) for the entire duration of their student visa.

This is not applicable to students from Norway and Sweden who are covered under a separate arrangement.

OSHC is offered by a number of providers. You may obtain OSHC from the provider of your choice.
<http://www.student.uwa.edu.au/international/newstudents/health>

The University of Western Australia has a 'preferred provider' agreement with Allianz Global Assistance. On acceptance and payment of your offer, UWA will arrange health cover with Allianz Global Assistance for the duration of your student visa.

For information on the University's agreement with Allianz Global Assistance, refer to <http://www.student.uwa.edu.au/international/newstudents/health>



How to apply

Applying directly to UWA

If you do not need approval from your home university, you can apply online. You will also need to complete the Home University Authorisation form.

<https://study.uwa.edu.au/how-to-apply/Start-my-application>

Applying through a UWA representative overseas

If you are applying via an approved UWA representative, your agent must first nominate you to the Global Learning Office. Once this nomination has been received, you will be sent an email from UWA with advice on how to apply online.

UWA has representatives in more than 60 countries. Check whether your country has a UWA representative:

<https://study.uwa.edu.au/International-students/find-an-international-agent>

Applying through your home university

If your university has an agreement with UWA, they must nominate you for the Study Abroad program. Once this nomination has been received, you will be sent an email from the UWA Global Learning Office on how to apply

Compulsory application documents

- a copy of your passport
- your original academic transcript (or a certified copy)
- a proposed study plan
- evidence of English language competency (if applicable).

Application Deadlines

Semester 1 (February - June)

Nominations by 15 November

Application and documents due by 30 November

Semester 2 (July - November)

Nominations by 30 April

Application and documents due by 15 May

2019 Tuition Fees

18 point enrolment: AUD \$10,275 per semester

24 point enrolment: AUD \$13,700 per semester





Contact us

Our Global Learning Office team is on hand to answer your questions about studying at UWA. Contact us about how uni works and how to apply, find out more about our courses and discover what life's like as a student.

For more information:
 E: studyabroad@uwa.edu.au
 P: +61 8 6488 8199.
study.uwa.edu.au/global



Important dates 2019

		From	To
Semester 1	Orientation Week	18 February	22 February
	Weeks 1 to 8	25 February	19 April
	Study break	22 April	26 April
	Weeks 9 to 12	29 April	24 May
	Study break	27 May	31 May
	Examination period	1 June	14 June
Break		25 June	29 July
Semester 2	Orientation Week	22 July	26 July
	Weeks 1 to 9	29 July	28 September
	Study break	30 September	4 October
	Weeks 10 to 12	7 October	25 October
	Study break	28 October	1 November
	Examination period	2 November	25 November

Useful links

Accommodation	On-campus: uwa.edu.au/colleges Off-campus: accommodation.uwa.edu.au/off-campus
Admission qualifications	https://study.uwa.edu.au/how-to-apply/entry-requirements/international-and-overseas-qualifications
Apply to study abroad at UWA	applicant.sims.uwa.edu.au/connect/webconnect
Cost of living	study.uwa.edu.au/cost-of-living
English language programs	celt.uwa.edu.au
Entry requirements	study.uwa.edu.au/courses-and-careers/study-abroad-and-student-exchange/Completing-exchange-at-UWA
Life at UWA	study.uwa.edu.au/international-students
Global Learning Office	study.uwa.edu.au/global
Overseas Student Health Cover	http://www.student.uwa.edu.au/international/newstudents/health
Study at UWA	study.uwa.edu.au
Student visa information	study.uwa.edu.au/student-visas homeaffairs.gov.au



THE UNIVERSITY OF
**WESTERN
AUSTRALIA**



Phone

Speak to the Global Learning
Office
Adviser 9am–5pm (AWST)
Monday to Friday
+61 8 6488 8199



Email

Email your
enquiries to:
studyabroad@uwa.edu.au



askUWA

Find answers to
FAQs anytime
ask.uwa.edu.au



Web chat

Chat with a Future Students
Adviser, 2.30–4.30pm (AWST)
Monday to Friday



[universitywa](https://www.facebook.com/universitywa)



[uwanews](https://twitter.com/uwanews)



[universitywa](https://www.instagram.com/universitywa)



[universitywa](https://www.youtube.com/universitywa)



[uwestudents](https://www.snapchat.com/add/uwestudents)



[uwainternational](https://www.weibo.com/uwainternational)



[UWA-Perth-WA](https://www.whatsapp.com/channel/0025375669)